



Northern view



Entrance



View from lounge and dining area towards north 2

House Hugo, Klipkop, Grabouw

Photos: Francois Swanepoel Text: Hannes Jacobs

The placement of the house close to the centre of the half hectare site was largely determined by a raised rocky outcrop which affords open mountain views to the north. This positioning was reinforced by a natural wetland area to the south which had to be contained and bridged to enter from the street.

The brief called for a double storey house with family sleeping accommodation on the first-floor level and family living and guest sleeping areas on the ground floor. This suggested and supported a compact footprint which minimised expensive foundation excavations on the rocky terrain.

The importance of the northern and the western orientation in designing for the cold Grabouw climate resulted in a square plan form. This, together with

mountain views, determined the placement of the living area, as well as the main bedroom suite upstairs. Further organisation of spaces is around a central atrium leading from the south entrance to the northern living area (lobby 1). The arrangement is repeated on the first-floor level (lobby 2). The clarity and directness of this single organising element became the primary design idea of the building.

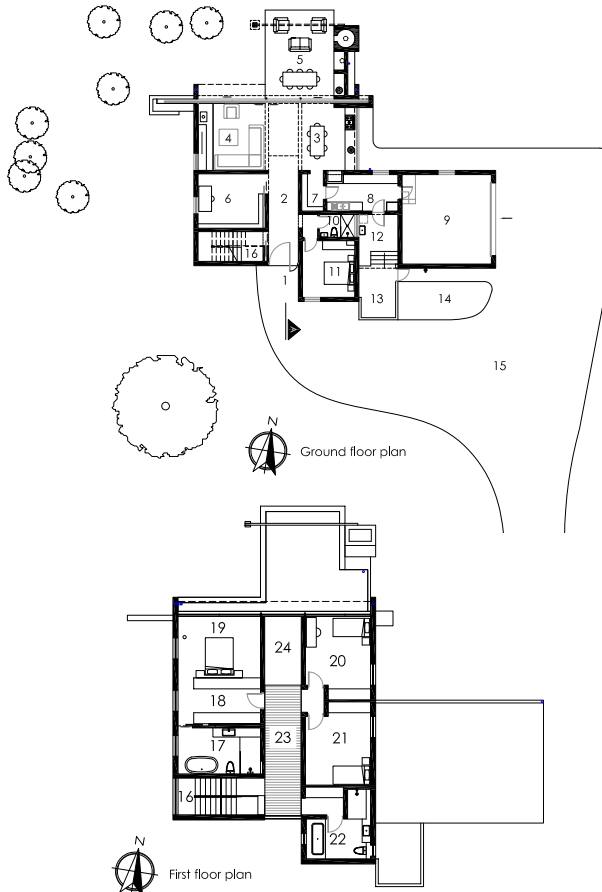
On the street façade, this conceptual arrangement is

expressed by the timber cladding to the atrium space, the ground floor section of which pivots to become the front door. The wood finish is repeated internally and through to the upper atrium floor. The rest of the façade is kept as solid as possible with windows mainly to the east and west to assure privacy from the street.

The north façade is spatially unrelated to the atrium and appears thus. Here the emphasis is on the

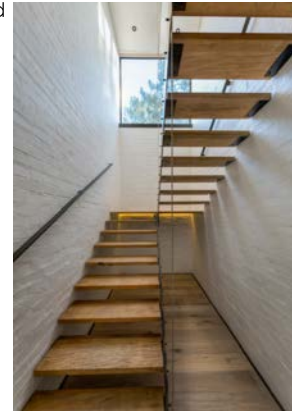
horizontal as opposed to the vertical articulation of the south façade: Wide windows towards the view are connected to form a single glazed element by ending internal walls behind deep mullions; roof overhangs are clad with timber to form simple horizontal lines.

The material and colour pallets were kept minimal and direct. Brickwork is bagged and painted and concrete is kept unfinished.



GROUND FLOOR PLAN legend

- 1. Entrance
- 2. Lobby 1
- 3. Kitchen/Dining
- 4. Lounge
- 5. Covered Patio
- 6. Playroom
- 7. Pantry
- 8. Scullery
- 9. Garage
- 10. Guest Bath
- 11. Guest Bed
- 12. Covered Yard
- 13. Yard
- 14. Planter bed
- 15. Driveway
- 16. Stair



Stair



View upwards through double volume

FIRST FLOOR PLAN legend

- 16. Stair
- 17. En-suite
- 18. Dressing
- 19. Bed1
- 20. Bed2
- 21. Bed3
- 22. Family Bath
- 23. Lobby 2
- 24. Double volume



South eastern view from street

MARCUS SMIT JACOBS ARCHITECTS

T +27 (0)21 852 1362

M +27 (0)72 246 4290

W www.marcussmit.co.za

MARCUS SMIT JACOBS ARCHITECTS